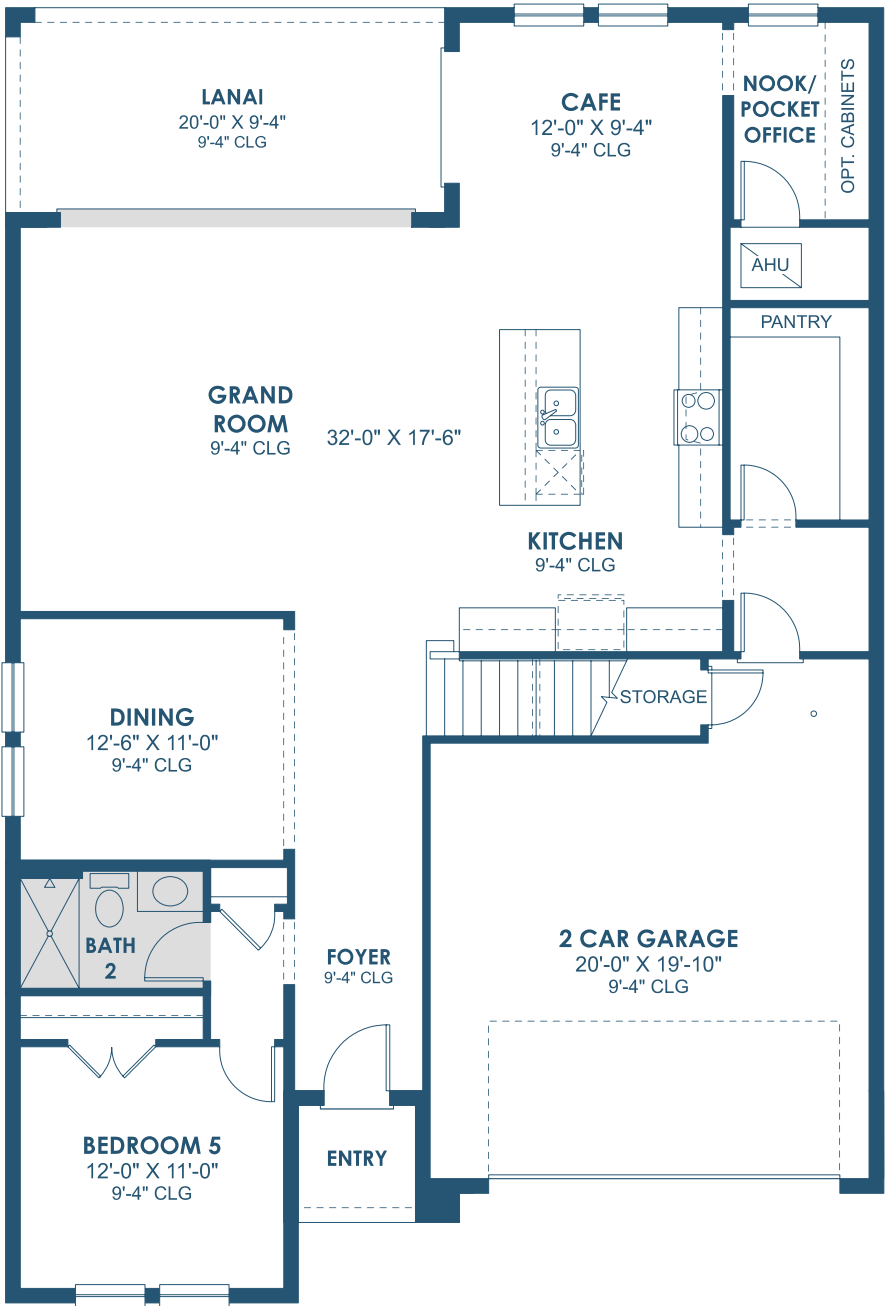


Quick Move-In Home | 3814 Farm Garden Ct

Pelican at Star Farms

Main Floor

- 5 Beds
- 3 Full Baths
- 2 Car Garage
- 3,381 Sq. Ft.



Selected Options:

- 16' SGD
- Shower at Bath 2



\*FRONT WINDOWS AND ENTRY VARY PER ELEVATION\*  
\*REFERENCE MASTER PLAN SETS FOR ACTUAL SQUARE FOOTAGE TOTALS AND ENTRY LAYOUTS\*

\*Artist's conceptual rendering. Actual construction may vary in color, features and dimensions. Availability, specifications, and pricing are subject to change without notice. All plans require developer approval and may be modified in order to comply with these developer requirements. Please speak with a Homes by WestBay Community Sales Manager for current information and about options where available. © 2024 Homes by West Bay LLC. CRC #057247. All rights reserved. Not an offer to purchase where prohibited by law. Broker Participation Welcome. 052324

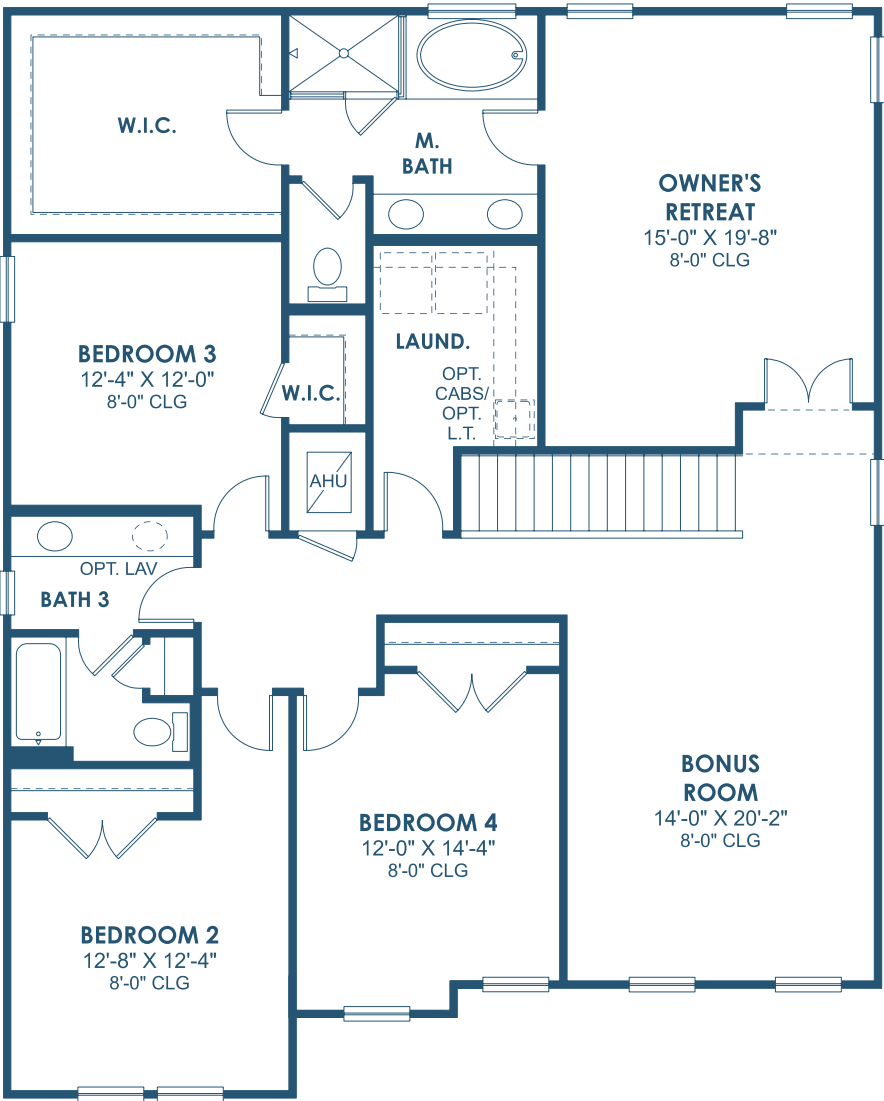


CRC #057247

Quick Move-In Home | 3814 Farm Garden Ct

Pelican at Star Farms

Second Floor  
5 Beds  
3 Full Baths  
2 Car Garage  
3,381 Sq. Ft.



No Options Selected

## Included Features

---

- Included 15 Seer HVAC
- Water Softener Plumb
- Laundry Tub Pre Plumb Only
- 8ft Doors
- Tankless Gas Water Heater
- Brass Floor Outlet