



CONSERVATION, PARKS & *Trails Guide*



LAKEWOOD RANCH®

OUR PARKS AND TRAILS GIVE YOU SO MANY WAYS TO EXPLORE YOUR STOMPING GROUNDS.

Wind around paths and boardwalks, try your hand at disc golf (it's a blast), or take your best four-legged friend for a splash at the dog park.

The great outdoors is all around you here, thanks to the stewardship of the Lakewood Ranch Districts, which manage and protect the area's natural resources, and provide residents access to carefully planned parks, trails and community open space.

Of our total acreage on The Ranch, 46% is set aside for open space and recreation. We've taken considerable care to eradicate invasive species and restore native flora and fauna, while providing access to 15,000 acres of lakes, parks and nature preserves, as well as 150+ miles of multi-surface trails.



In addition to being a great place for families and friends to play, many of these areas are home to precious wildlife. Among the species you are likely to spot are deer, river otters, Florida sandhill cranes, and the endangered gopher tortoise, for whom we have set aside a 38-acre preserve.



	DOG PARK	DISC GOLF	NATURE TRAILS	EXERCISE STATIONS	FISHING LAKE	KAYAK/BOAT LAUNCH	PICNIC PAVILION	SPORTS FIELDS	BASKETBALL COURTS	PICKLEBALL COURTS	TENNIS COURTS	PLAYGROUND / TOT LOT	INLINE SKATE PARK / HOCKEY	VOLLEYBALL COURTS	SPLASH PARK	PARKING	RESTROOMS
LWR COMMUNITY PARK AMENITIES																	
BOB GARDNER COMMUNITY PARK 2719 WHITE EAGLE BOULEVARD	●	●	●					●	●			●				●	●
BRADEN RIVER NATURE PARK LAKEWOOD RANCH BOULEVARD ACROSS FROM HIDDEN RIVER TRAIL					●			●								●	
COUNTRY CLUB/EDGEWATER PARK 8256 LEGACY BOULEVARD								●	●			●		●		●	
GREENBROOK ADVENTURE PARK 13010 ADVENTURE PLACE	●		●	●				●	●	●		●	●	●		●	●
HERON'S NEST NATURE PARK LOCATED SOUTH OF SUMMERFIELD LAKE OFF OF ADVENTURE PLACE			●		●			●								●	
JAMES L. PATTON PARK 5725 WHITE EAGLE BOULEVARD			●		●	●	●					●				●	●
ROGER HILL PARK LOCATED OFF OF WHITE EAGLE BOULEVARD			●					●									
SILVER FALLS PARK LOCATED OFF FIELDS LANE AND SILVER FALLS RUN								●									
SUMMERFIELD COMMUNITY PARK 6402 LAKEWOOD RANCH BOULEVARD								●	●	●	●	●		●		●	●
WATERSIDE PARK LOCATED ADJACENT TO WATERSIDE PLACE				●				●				●		●	●	●	●
FOR PARK PAVILION RENTALS, DOG PARK MEMBERSHIPS, BIKING TRAIL MAPS AND ADDITIONAL INFORMATION, VISIT MYLWR.COM																	

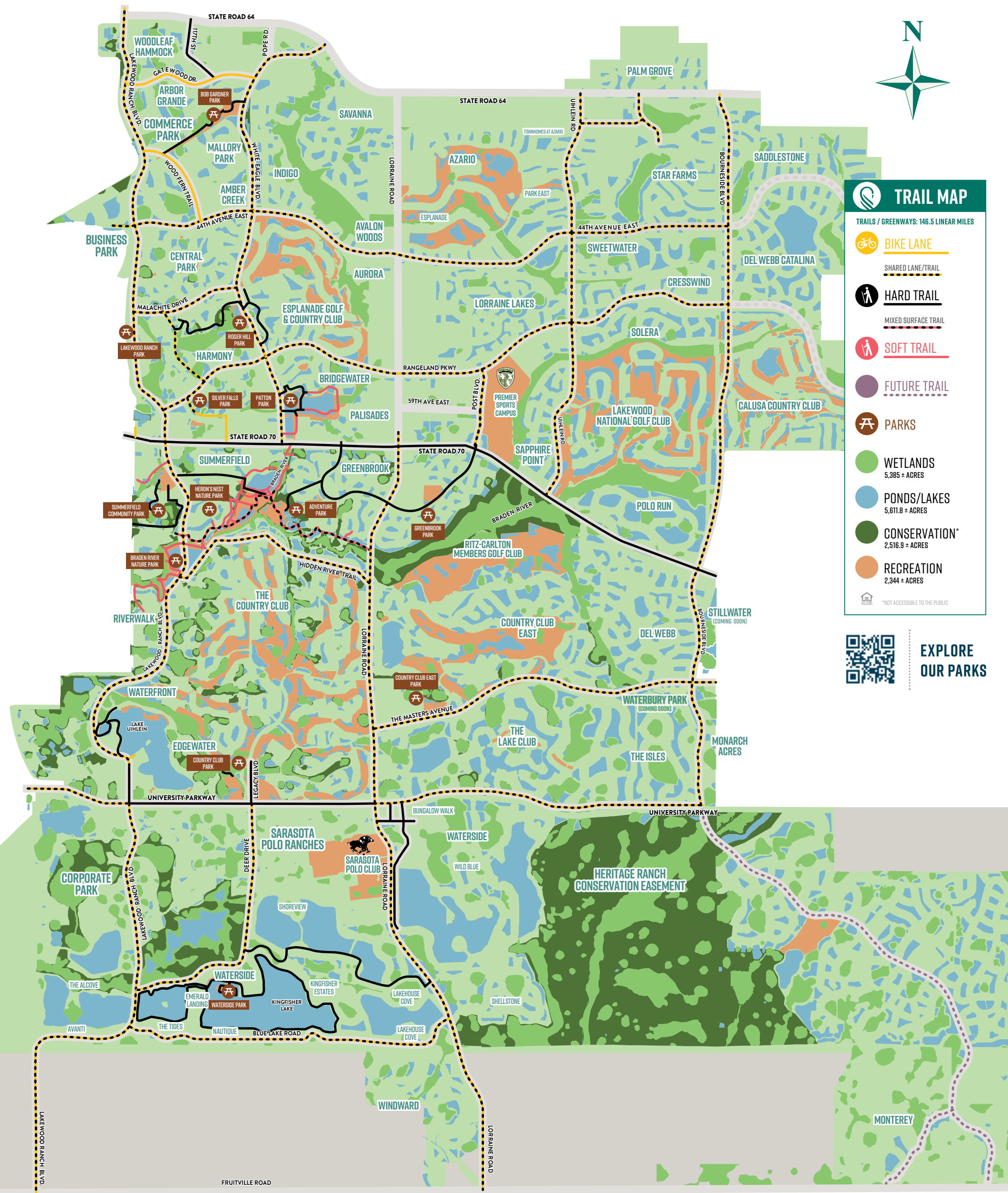
COUNTY PARKS AT LAKEWOOD RANCH																	
COUNTRY CLUB EAST PARK 15015 MASTERS AVENUE								●	●			●				●	●
GREENBROOK PARK 6655 GREENBROOK BOULEVARD								●	●			●				●	●
LAKEWOOD RANCH PARK 5350 LAKEWOOD RANCH BOULEVARD								●	●	●	●	●	●			●	●
FOR COUNTY PARK INFORMATION AND PAVILION RENTALS, VISIT MYMANATEE.ORG																	

Amenities subject to change without notice.

RESERVE PARK PAVILIONS AND SPORTS FIELDS | REGISTER TO BECOME A DOG PARK MEMBER | SUBMIT MAINTENANCE REQUESTS | ALL ONLINE AT

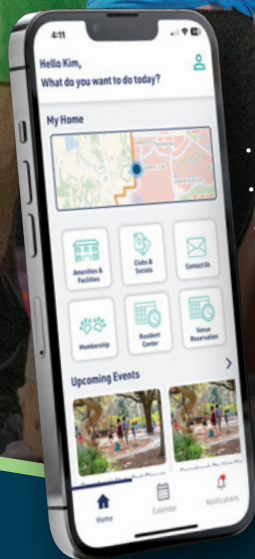


CONSERVATION, PARKS & *Trails Guide*



NEW RESIDENT PLATFORM

Simple. Seamless. User-Friendly.



- 1 LOGIN FOR APP & WEBSITE
- REGISTER FOR EVENTS
- RESERVE PARKS & VENUES
- JOIN A CLUB
- APPLY FOR DOG PARK MEMBERSHIP
- VOLUNTEER OPPORTUNITIES
- ONLINE PAYMENT SYSTEM
- HOA INFORMATION

 **myLWR**.COM

